

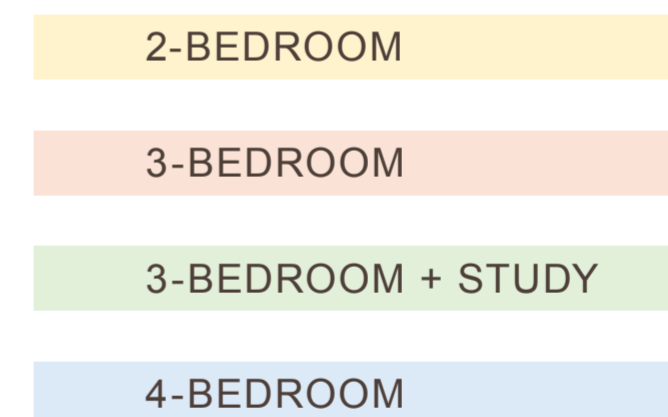
# SITE PLAN



- |                              |                        |
|------------------------------|------------------------|
| <b>1st Storey:</b>           | <b>2nd Storey:</b>     |
| 1 Arrival Drop-Off           | 12 Fitness Terrace     |
| 2 Gym                        | G Generator            |
| 3 Jacuzzi Garden             |                        |
| 4 Hanging Lounger            | <b>7th Storey:</b>     |
| 5 Lap Pool 20m               | 13 Reading Lounge      |
| 6 Aqua Deck                  |                        |
| 7 Pool Deck                  | <b>Roof Terrace:</b>   |
| 8 Feature Pavilion           | 14 BBQ Pavilion        |
| 9 Kid's Pool                 | 15 Teppanyaki Pavilion |
| 10 Stone Bench               | 16 Lawn Area           |
| 11 Entrance Water Feature    | 17 Water Jets          |
| PE Pedestrian Entrance       | 18 Terrace Planter     |
| AT Accessible Toilet         | AT Accessible Toilet   |
| BP Bin Point                 | WT Water Tank Area     |
| ES Electrical Substation     |                        |
| BC Basement Carpark Entrance |                        |
| VS Ventilation Shaft         |                        |

# SCHEMATIC DIAGRAM

	01	02	03
	Communal Roof Terrace		M&E
14	D1	C1	B1
13	D	C	B
12	D	C	B
11	D	C	B
10		C	B
9		C	B
8	Communal	C	B
7	Sky Terrace	C	B
6		C	B
5		C	B
4		C	B
3	Communal	C	B
2	Sky Terrace	C	B
1			
B1	Basement Carpark		
B2	Basement Carpark		

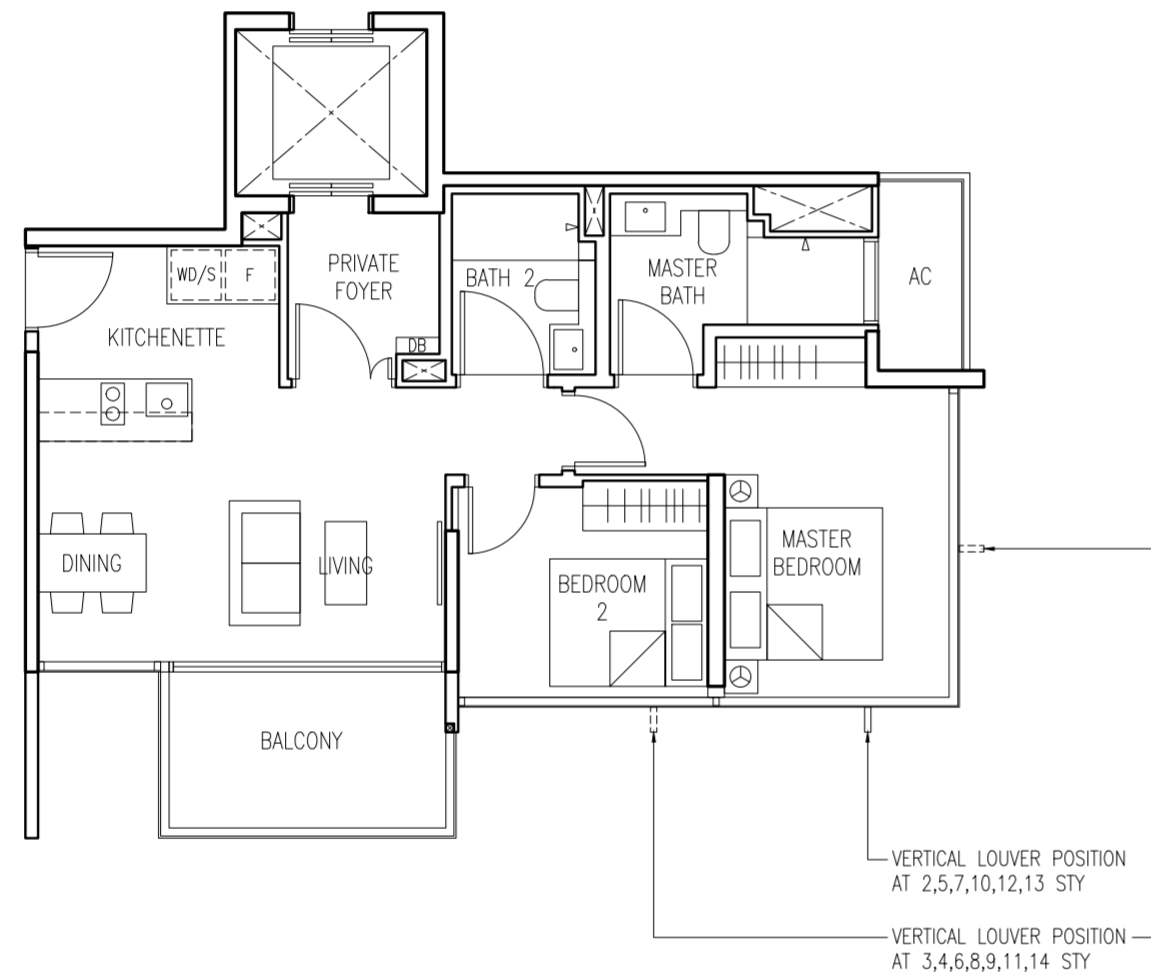


# 2-BEDROOM

Approx. 72 sqm / 775 sqft

**TYPE B**  
Clear Ceiling: 3.2m  
#02-03 to #13-03

**TYPE B1**  
Clear Ceiling: 4.275m  
#14-03

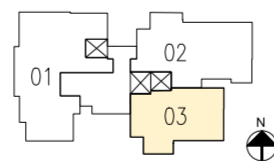


0 0.5 1 1.5 3 5M

DRAWN TO SCALE 1:100

**LEGEND:**

AC - AIRCON LEDGE  
F - FRIDGE  
DB - DISTRIBUTION BOARD  
WD - WASHER CUM DRYER  
S - STEAM OVEN



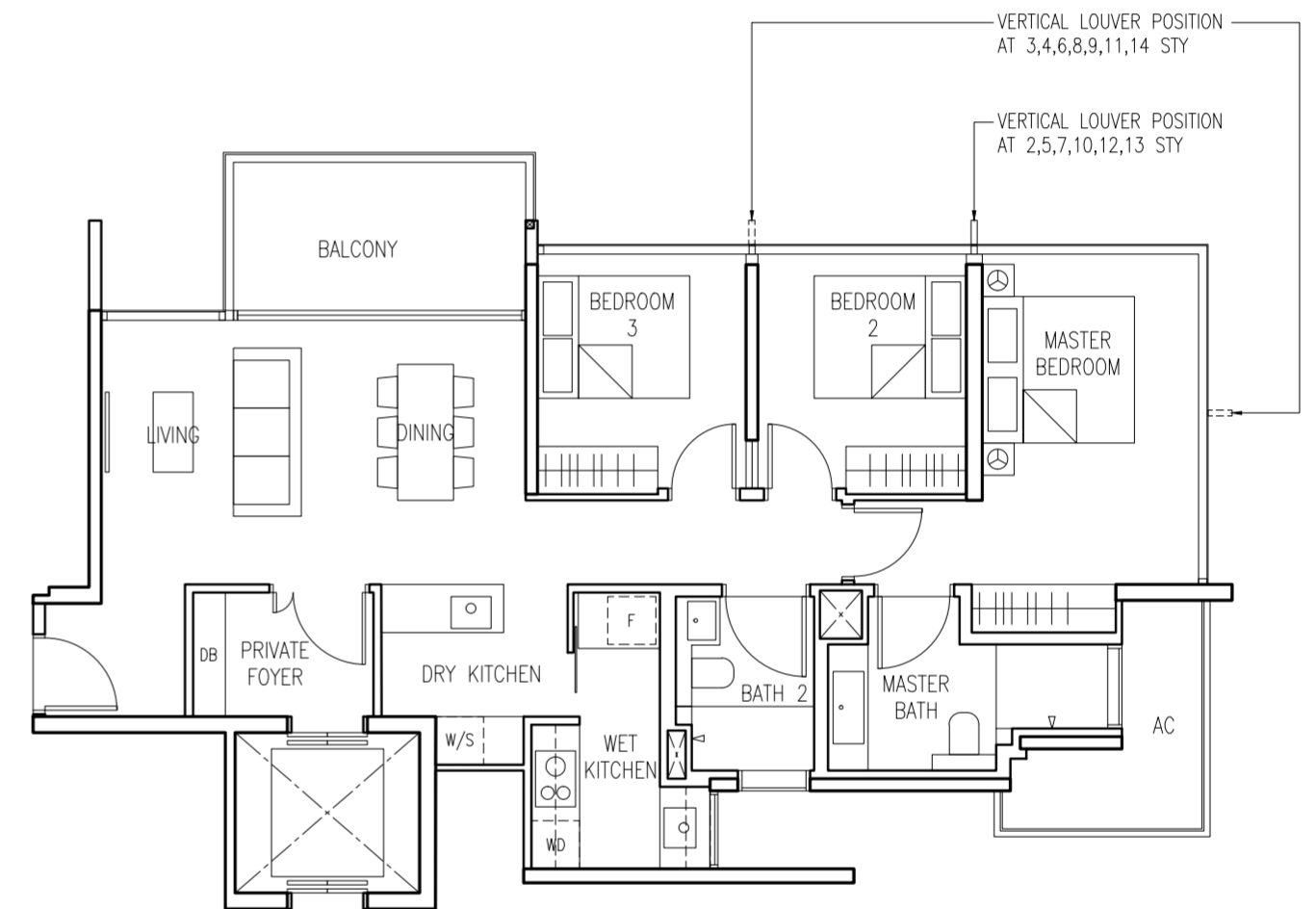
- THE BALCONY IN THE UNIT SHALL NOT BE ENCLOSED UNLESS WITH THE APPROVED BALCONY SCREEN. FOR ILLUSTRATION OF THE APPROVED BALCONY SCREEN, PLEASE REFER TO THE LAST PAGE OF THIS BROCHURE.
- ALL PLANS ARE SUBJECT TO CHANGE AS MAY BE REQUIRED OR APPROVED BY THE RELEVANT AUTHORITIES. INDICATED FLOOR AREAS ARE APPROXIMATE MEASUREMENTS AND AREA SUBJECT TO FINAL SURVEY.

# 3-BEDROOM

Approx. 98 sqm / 1055 sqft

**TYPE C**  
Clear Ceiling: 3.2m  
#02-02 to #13-02

**TYPE C1**  
Clear Ceiling: 4.275m  
#14-02

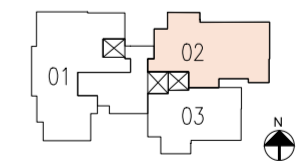


0 0.5 1 1.5 3 5M

DRAWN TO SCALE 1:100

**LEGEND:**

AC - AIRCON LEDGE  
F - FRIDGE  
DB - DISTRIBUTION BOARD  
WD - WASHER CUM DRYER  
S - STEAM OVEN  
W - WINE CHILLER

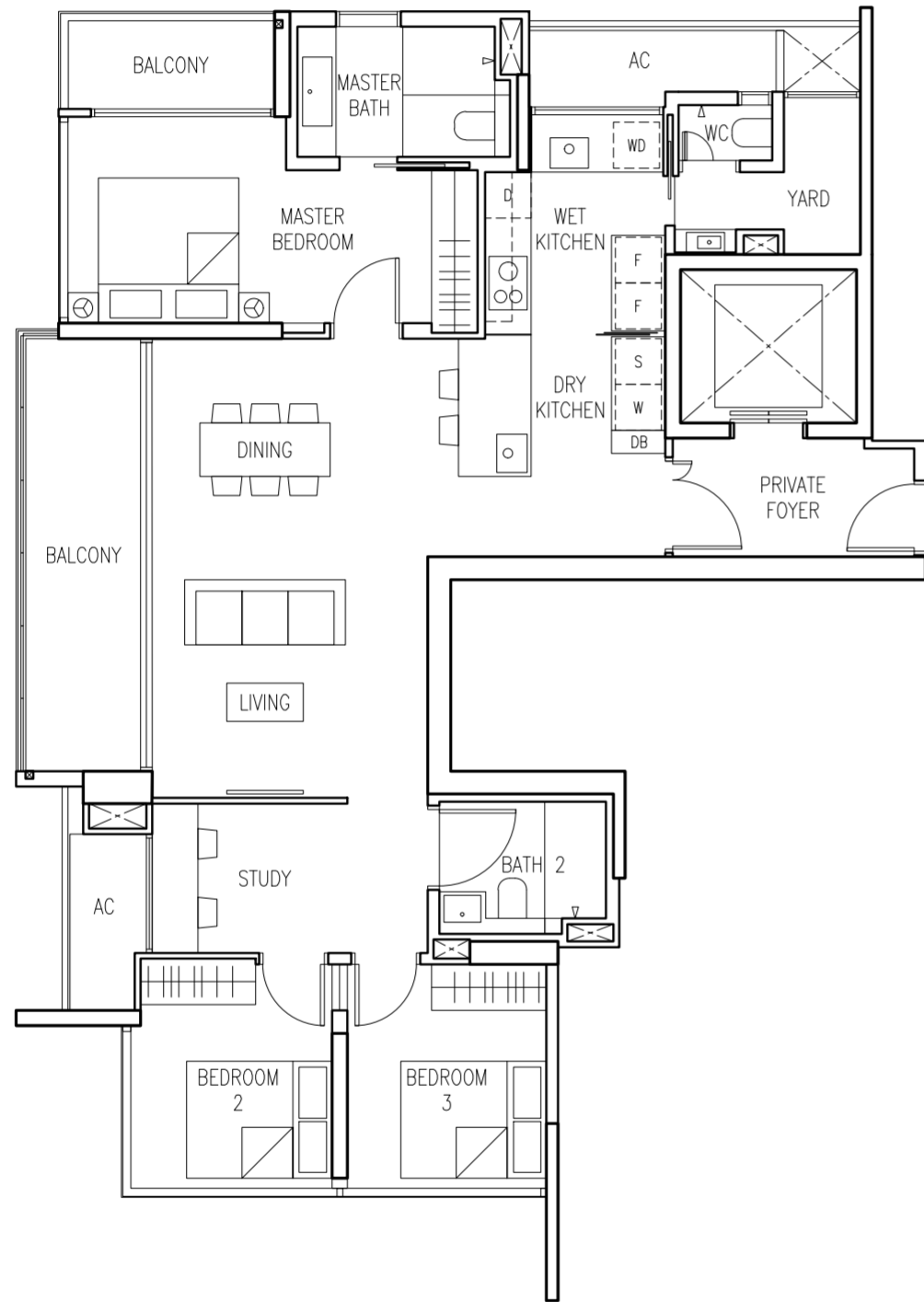


- THE BALCONY IN THE UNIT SHALL NOT BE ENCLOSED UNLESS WITH THE APPROVED BALCONY SCREEN. FOR ILLUSTRATION OF THE APPROVED BALCONY SCREEN, PLEASE REFER TO THE LAST PAGE OF THIS BROCHURE.
- ALL PLANS ARE SUBJECT TO CHANGE AS MAY BE REQUIRED OR APPROVED BY THE RELEVANT AUTHORITIES. INDICATED FLOOR AREAS ARE APPROXIMATE MEASUREMENTS AND AREA SUBJECT TO FINAL SURVEY.

# 3-BEDROOM + STUDY

Approx. 120 sqm / 1292 sqft

**TYPE CS**  
Clear Ceiling: 3.2m  
#02-01 to #10-01



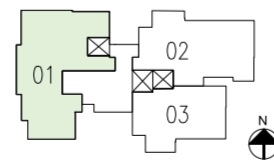
0 0.5 1 1.5 3 5M

DRAWN TO SCALE 1:100

**LEGEND:**

- AC - AIRCON LEDGE
- F - FRIDGE
- DB - DISTRIBUTION BOARD
- WD - WASHER CUM DRYER
- S - STEAM OVEN
- W - WINE CHILLER
- D - DISH WASHER

- THE BALCONY IN THE UNIT SHALL NOT BE ENCLOSED UNLESS WITH THE APPROVED BALCONY SCREEN. FOR ILLUSTRATION OF THE APPROVED BALCONY SCREEN, PLEASE REFER TO THE LAST PAGE OF THIS BROCHURE.
- ALL PLANS ARE SUBJECT TO CHANGE AS MAY BE REQUIRED OR APPROVED BY THE RELEVANT AUTHORITIES. INDICATED FLOOR AREAS ARE APPROXIMATE MEASUREMENTS AND AREA SUBJECT TO FINAL SURVEY.

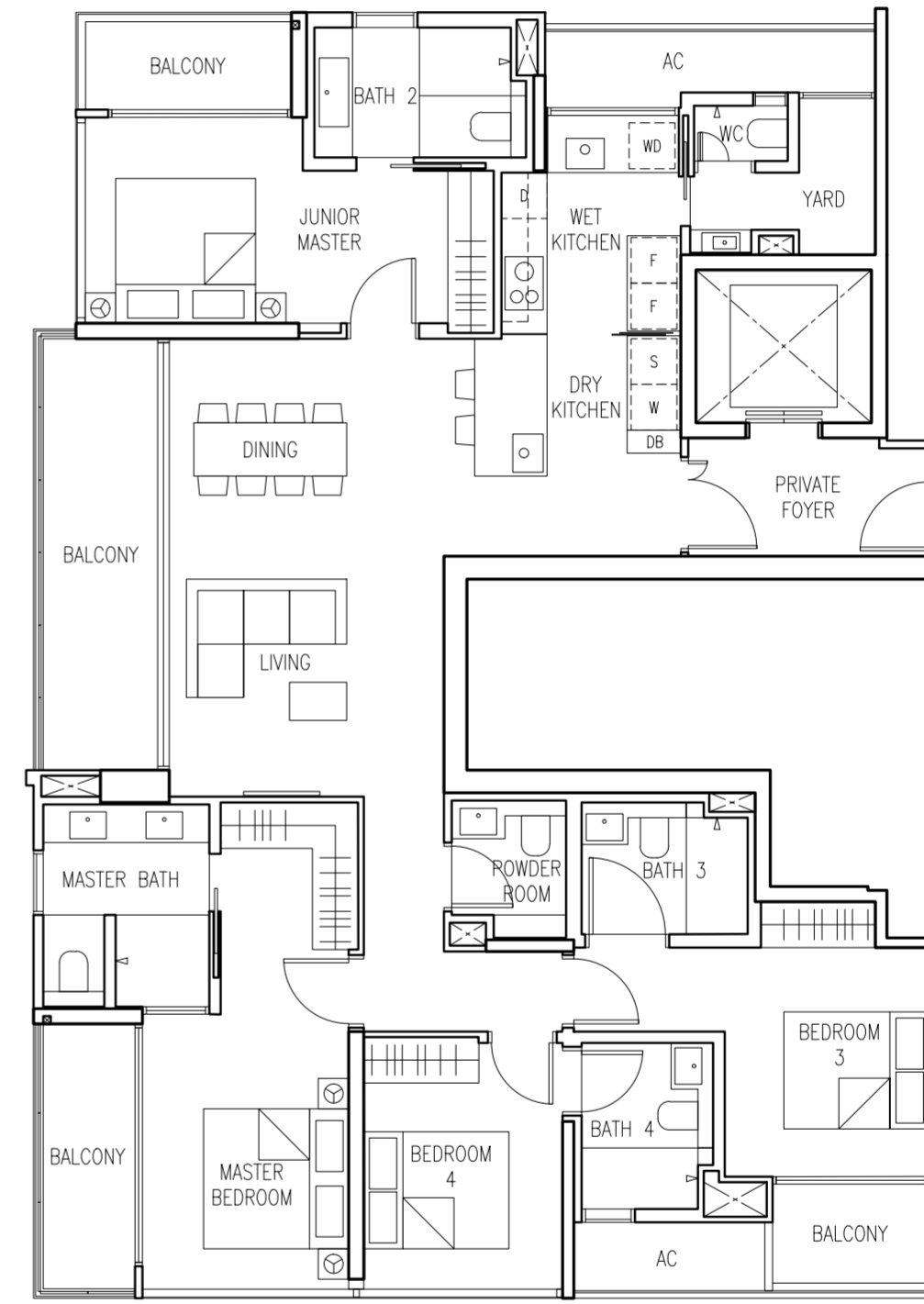


# 4-BEDROOM

Approx. 162 sqm / 1744 sqft

**TYPE D**  
Clear Ceiling: 3.2m  
#11-01 to #13-01

**TYPE D1**  
Clear Ceiling: 4.275m  
#14-01



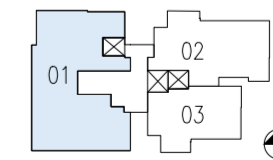
0 0.5 1 1.5 3 5M

DRAWN TO SCALE 1:100

**LEGEND:**

- AC - AIRCON LEDGE
- F - FRIDGE
- DB - DISTRIBUTION BOARD
- WD - WASHER CUM DRYER
- S - STEAM OVEN
- W - WINE CHILLER
- D - DISH WASHER

- THE BALCONY IN THE UNIT SHALL NOT BE ENCLOSED UNLESS WITH THE APPROVED BALCONY SCREEN. FOR ILLUSTRATION OF THE APPROVED BALCONY SCREEN, PLEASE REFER TO THE LAST PAGE OF THIS BROCHURE.
- ALL PLANS ARE SUBJECT TO CHANGE AS MAY BE REQUIRED OR APPROVED BY THE RELEVANT AUTHORITIES. INDICATED FLOOR AREAS ARE APPROXIMATE MEASUREMENTS AND AREA SUBJECT TO FINAL SURVEY.





TSKY is a residential and mixed-use property developer in Singapore. As a JV between industry veterans Tiong Seng and Ocean Sky, we are able to tap on the expertise and experience of our parent companies as well as explore better ways to design and build contemporary properties.

When designing our properties, we always take the time to understand and address how customer needs are changing. When building our properties, we are able to always consider and evaluate new technology to create smart spaces that work for people. With us, you will always enjoy properties with the best of form and function.



Sino-Ocean Group Holding Limited ("Sino-Ocean Group") was listed on the Hong Kong Stock Exchange on September 28, 2007 (ticker 03377). The company is one of the top ten real estate companies from Mainland China listed in Hong Kong. In March 2008, the company was included in the Hong Kong Hang Seng Composite Index, and was included in the Hang Seng Hong Kong China Enterprises Index as a constituent stock.

Sino-Ocean Group Holding Limited is an investment and financing group with outstanding investment capacity built on advanced real estate business. Sino-Ocean Group has a total investment value of more than 200 billion yuan and an annual sales of over 100 billion yuan.



Seacare Property Development Pte Ltd, an asset investment arm of the Seacare Group, is focused on the real estate market in Singapore and overseas.

With a nimble investment approach and an extensive network of partners, the Seacare Group identifies fast evolving opportunities in property investments and development projects across a portfolio of 16 properties in 13 cities spanning across 3 countries.

We are committed to long-term partnerships with various strategic partners, who bring with them extensive technical expertise and deep-lying corporate capabilities.



MG Investments is a holding company that invests in a diverse range of interest in automobile & real estate. Its real estate arm is involved in the investment and development of residential properties. MG Investments was founded with the mission to pursue investment opportunities with integrity for the benefit of its stakeholders, its people and the community.

Developer: TSKY Cairnhill Pte. Ltd. • Co. Registration No.: 201814965W • Housing Developer's No.: C1357 • Location: 16 Cairnhill Rise on Lot 00751M TS27 (Newton Planning Area) • Tenure of Land: Estate in fee simple • Encumbrances on the Land: Mortgage in favour of United Overseas Bank Limited. • Expected date of Vacant Possession: 15 September 2023 • Expected date of Legal Completion: 15 September 2026



A BCA GREEN MARK  
GOLD PLUS DEVELOPMENT

